

MONTHLY MEMBERSHIP PROGRESS REPORT

District 2 T1

Results as of: 1/31/2024

GMT:

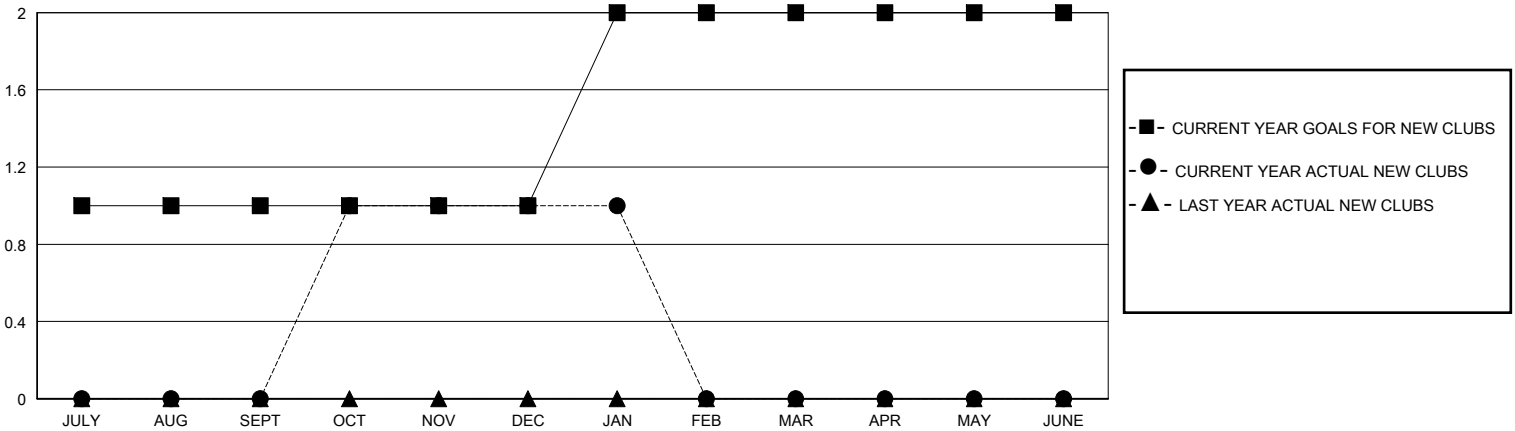
LOCATION TEXAS

GMT CA

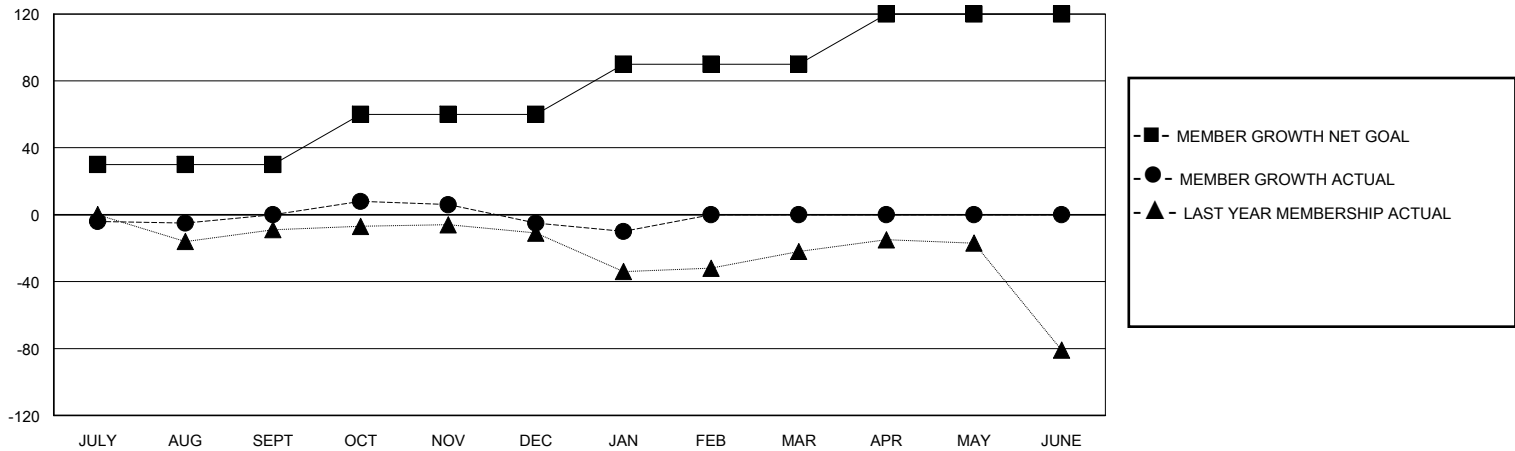
Clubs			
RESULTS FOR 2023-2024			
QUARTER	NEW CLUB GOAL	NEW CLUBS	DROPPED CLUBS
JULY/AUG/SEPT	1	0	0
OCT/NOV/DEC	0	1	0
JAN/FEB/MAR	1	0	0
APR/MAY/JUNE	0	0	0

Members			
RESULTS FOR 2023-2024			
QUARTER	MEMBER GROWTH NET GOAL	MEMBER GROWTH ACTUAL	DROPPED MEMBERS ACTUAL (including transfers)
JULY/AUG/SEPT	30	52	48
OCT/NOV/DEC	30	57	61
JAN/FEB/MAR	30	4	8
APR/MAY/JUNE	30	0	0

GOALS AND ACTUAL NEW CLUBS CUMULATIVE



GOALS AND ACTUAL MEMBERS CUMULATIVE



DROPPED CLUBS: 0	16 CLUBS OF 36 ADDED 1 OR MORE NEW MEMBERS	GENDER DISTRIBUTION MALE 746 (60.70%) FEMALE 483 (39.30%)
DROPPED MEMBERS DECEASED 9 CLUB CANCELLED 0 OTHER 108 TOTAL 117	CLICK HERE FOR CUMULATIVE MEMBERSHIP DATA	TOTAL FAMILY UNIT MEMBERS 142 FAMILY MEMBERS PAYING HALF DUES 72